

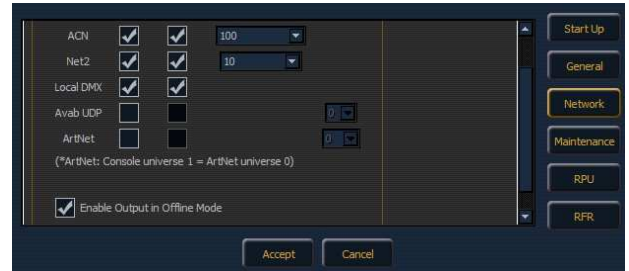


Eos/Ion Settings

Eos and Ion can output both Net2 (EDMX) and Net3 (sACN/E1.31) levels via ethernet. As these protocols are enabled by default on Eos and Ion, you will likely not need to enable them in the Settings menu of the Eos welcome screen.

Open the Settings menu, then navigate to the Network section. Ensure that ACN and Net2 are enabled and defaulted.

If you are working with Eos/Ion Offline on your PC and you want to capture these levels into a visualiser, tick the Enable Output in Offline Mode box - this will send these Network protocols whilst offline. It is normal to see a slow refresh rate and occasional dropouts while outputting offline. You will be asked to confirm this option each time Offline is launched.



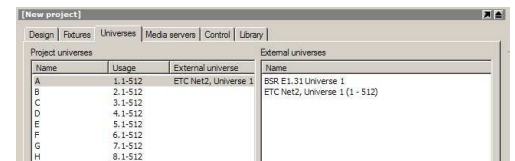
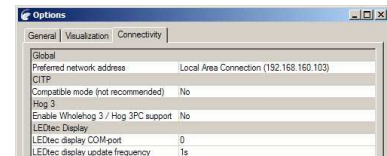
Capture Settings

Capture can receive both Net2 (EDMX) and Net3 (sACN/E1.31) levels via ethernet.

In the Tools menu of Capture, select Options. Navigate to the Connectivity tab, and select your network interface card if required.

Following a restart, open your existing project or start a new one. In the Project Window, you will see a tab showing Universes. You should see both BSR E1.31 and ETCNet2 Universes, assuming you have any dimmers patched on your console.

Capture executable (presentation) files should also receive these network levels.

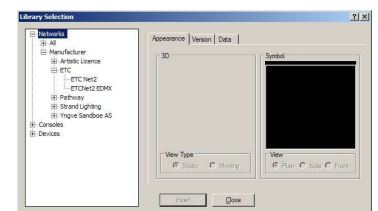
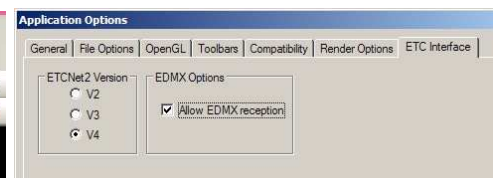
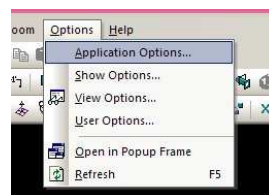


Wysiywg Settings

Capture can receive Net2 (EDMX) levels via ethernet.

In the Options menu of Wysiywg, select Application Options and then navigate to the ETC Interface tab. Ensure that "Allow EDMX reception" is ticked, and that the ETCNet2 Version is set to V4. Note: You **must** restart Wysiywg after making this change. You also **must** be an Administrator on the computer. EDMX reception has been reported to not function in release 23 and lower under Vista. Contact Cast Lighting for any updates.

Note: There are ETCNet2 devices in the Device Manager in Wysiywg, but these **do not function**. Allow EDMX reception as shown above to see EDMX levels.



Other Visualisers

Any visualiser that can read EDMX, sACN, Art-Net, or Avab UDP network levels should be able to connect to Eos/Ion. Alternatively,

Alternatively, there are several DMX-USB converters available, such as the ENTTEC DMX USB Pro, are available. Consult your visualiser's documentation.